

CELİKEL

w w w . c e l i k e l t a r i m . c o m

CHOICE OF PROFESSIONALS

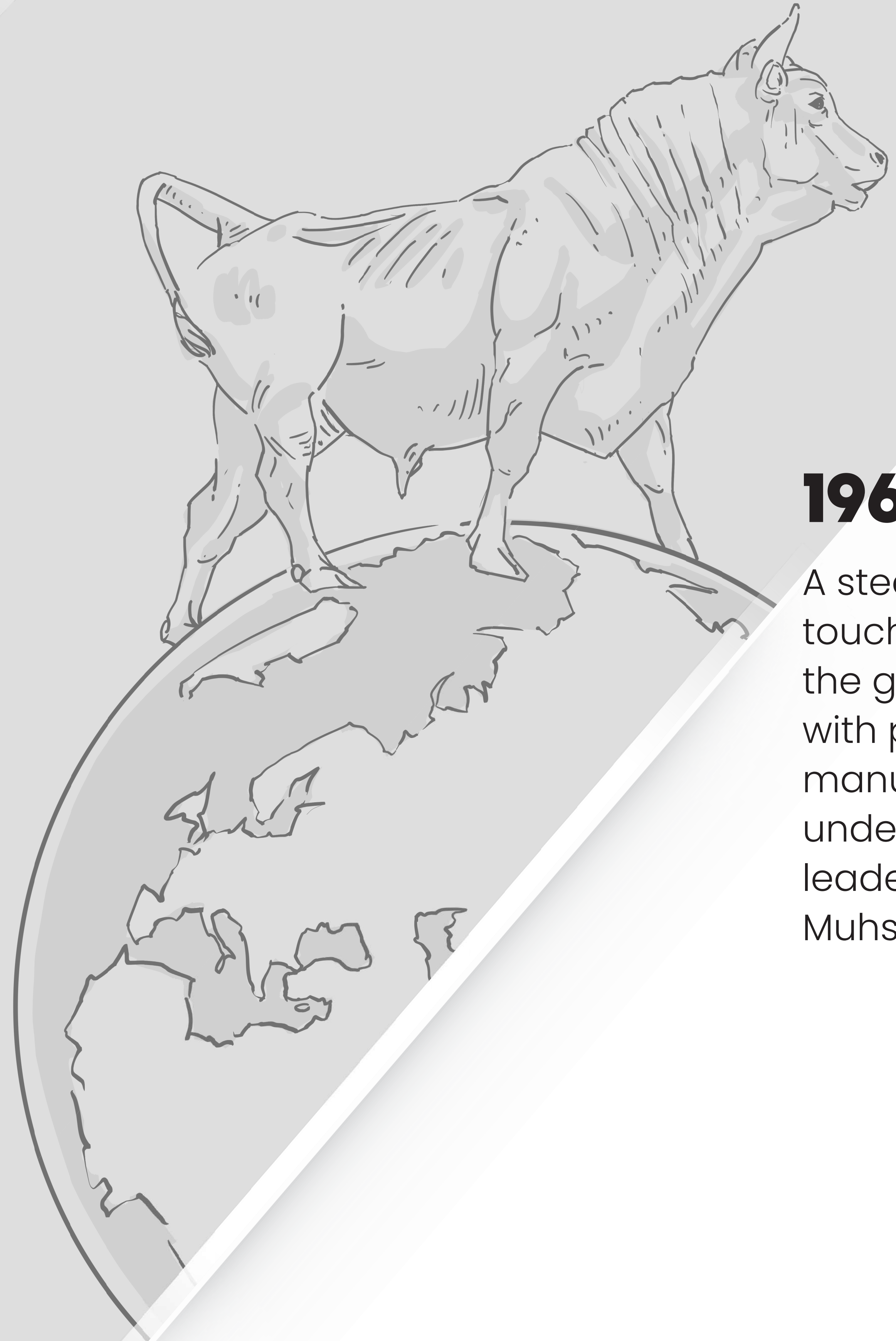


H I S T O R Y

Celikel agri cultural machinery company was established by Mr. Muhsin TÜRKMEN in Boğazlıyan district of Yozgat in 1962. Our enterprise began manufacturing plough implements, then in 1985 included cultivator into its product range and so entered into a development period. In 1992 Our enterprise moved its producing plants to Konya, which is an industrial city in order to keep abreast of the developing of new technologies also to produce more quality and various products.

1962

Deceased Muhsin TÜRKMEN brought together the first hammer hit and steel as brown as berry in Boğazlıyan district in Yozgat.



1963

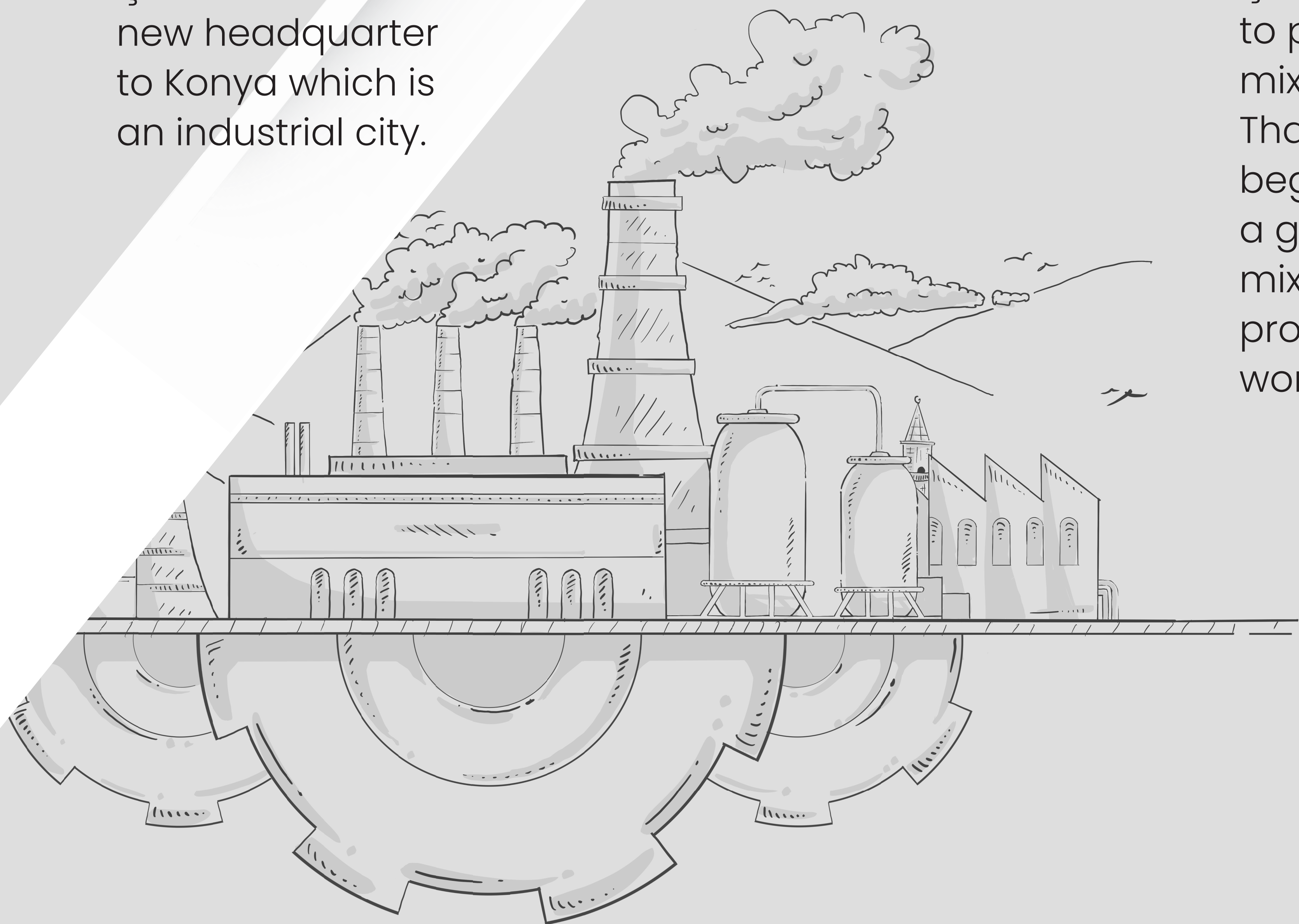
A steel hand touched the ground with plough manufacturing under the leadership of Muhsin TÜRKMEN.

1980

The first step was taken in exportation when manufacturing power of Çelikel which its spirit outgrew to its body outgrew to borders of country. The same step was signal of a successive exportation adventure.

1992

Çelikel moved its new headquarter to Konya which is an industrial city.



1997

Çelikel gave up manufacturing of soil cultivation machines and canalized manufacturing of livestock farming machines. Silage machines and forage chopping machines were added to product group.

2003

Çelikel started to produce feed mixer machine. That was a nice beginning to be a greatest feed mixer machine producer of the world.

2016

Çelikel was experiencing the honour of being one of the 100 fastest growing companies of Turkey (TOBB) as well while it was taking its part among the companies which completed their 50th year in machine manufacturing!

2017

Çelikel had a first R&DCentre which was governmentally approved in its sector. Çelikel which is a brand that has innovation its genes, was selected the most innovative 50th company of Turkey in InovaLIG 2017.

OUR **FACTORY**

OPEN Area 10.000 m²



CLOSED Area 30.000 m²

PRESENTATION **2021**



250 EMPLOYEES

80% BLUE
COLLAR



20% WHITE
COLLAR

PRESENTATION **2021**



A man with a full white beard and a flat cap sits on a large bale of hay. He is holding a long-barreled rifle. A dog is sitting next to him, looking towards the camera. The background is dark, making the hay and the man stand out.

REAL FARMERS ARE HUNTERS

Manufactured by *Gelikel*

VISSION

PRESENTATION 2021



■ Our vision is to lead the the domestic and foreign markets in the agricultural machinery sector and to become a company that can meet the demands of the customers as a leading company in the market.

STRATEGY

PRESENTATION 2021



- Follow up international projects.
- To increase the number of international dealers.
- To begin marketing in South American countries.
- To increase high profit products in our product range.
- To take certification of Turquality and to get chance of
- about 60% government support of our investment and expenditures.

WHAT WE ARE DOING?

Feed Mixer Machines

(2018 Manufacturing 1345 Pcs.)

Silage Machines

(2018 Manufacturing 1119 Pcs.)

Manure Management Machines

(2018 Manufacturing 81 Pcs.)

Packaging Machines

(2018 Manufacturing 16 Pcs.)

Bale Loader Machines

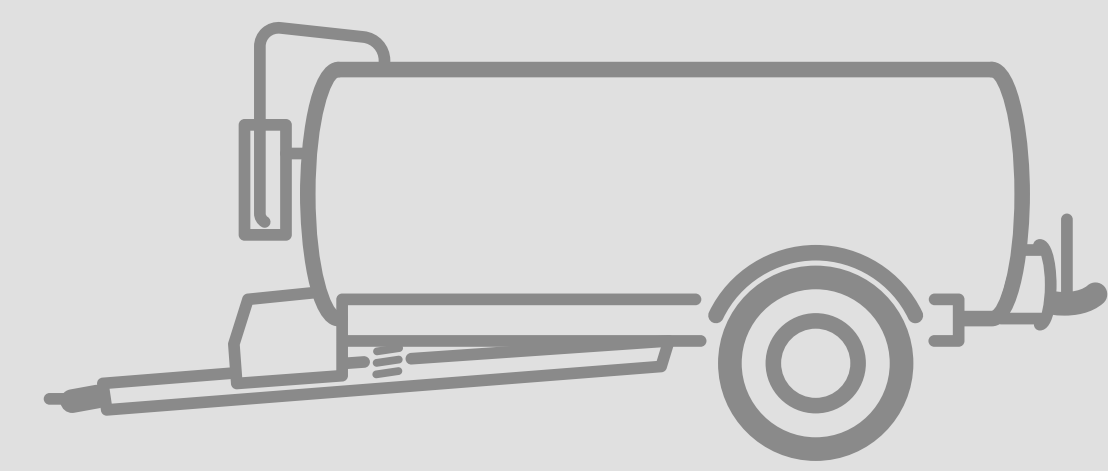
(2018 Manufacturing 493 Pcs.)



MARKET SHARE

PRESENTATION **2021**

% 14



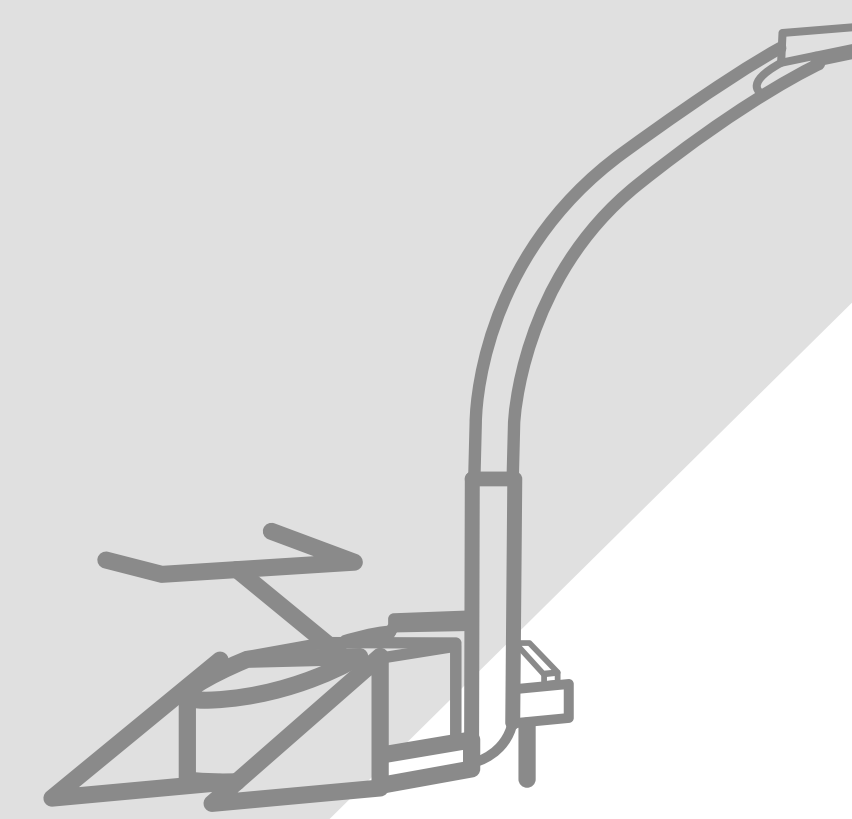
Manure
Management
Machines

% 26



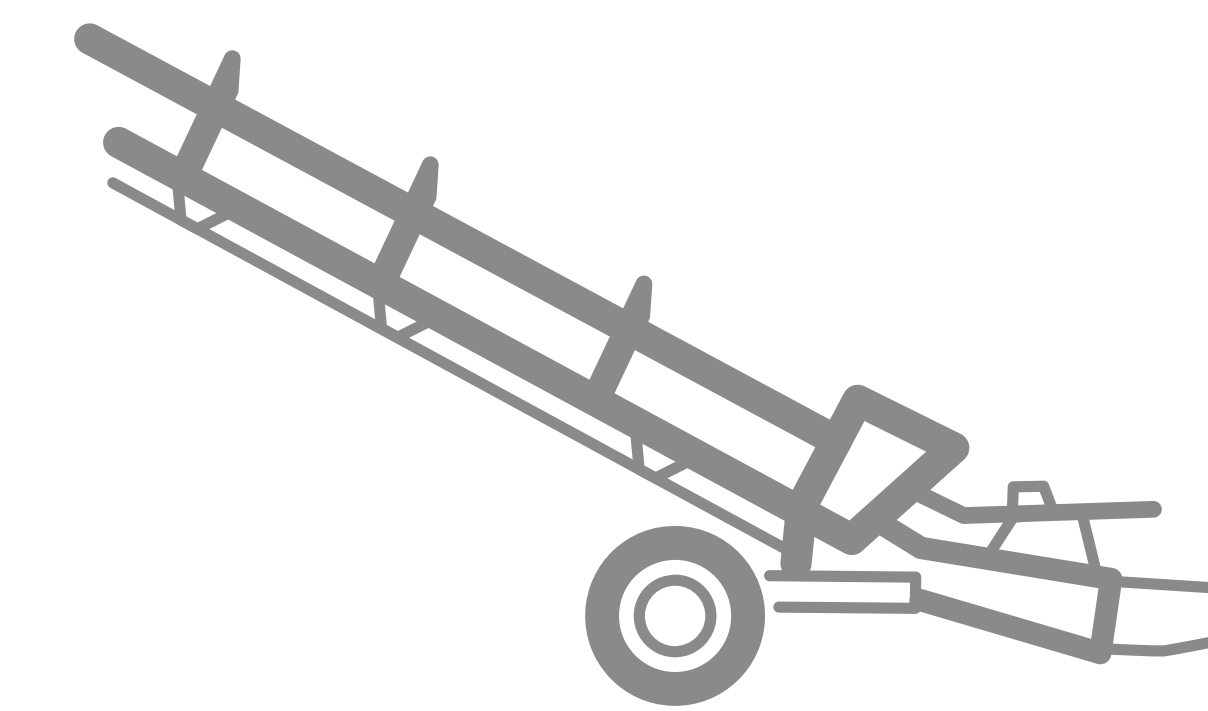
Feed Mixer
Machines

% 48



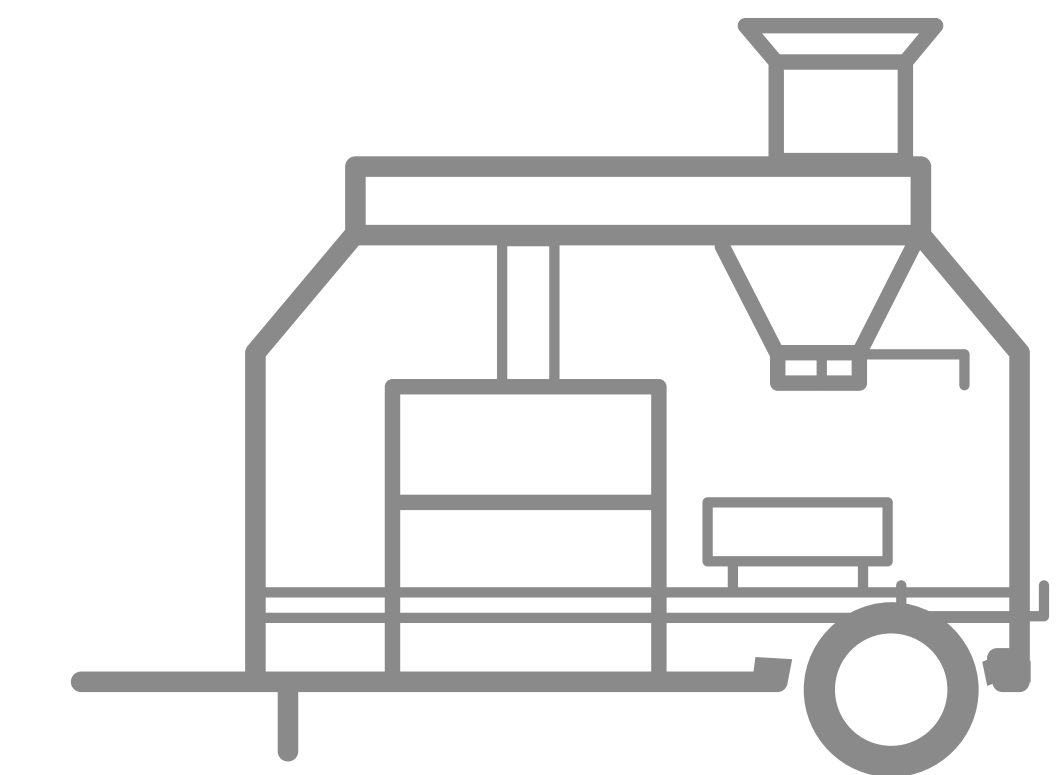
Silage
Machines

% 40



Bale Loader
Machines

% 11



Packaging
Machines

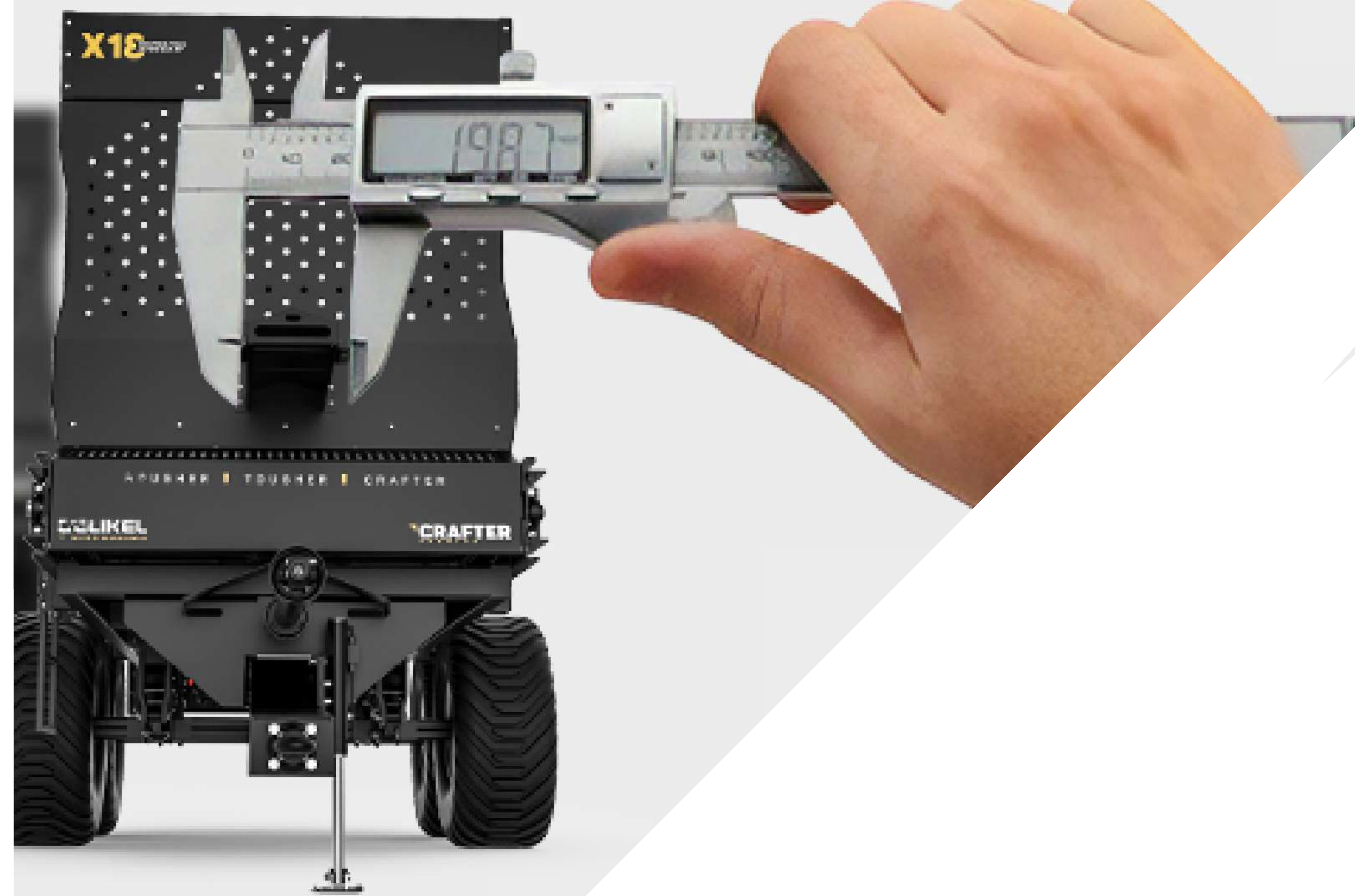
PRESENTATION 2021

R&D Center which is Government Supported

With our R&D center licence which got by Tubitak,
we are getting 50% financial support for our all
expenditures.

R&D CENTRE





STRONG MACHINERY GO UNDER STRONG PROCESSES

Our machinery can operate in reliable manner even under the harshest conditions. Therefore, we do not leave anything to chance in our manufacturing: We focus on superb quality in material selection, superior resistance and resistance against abrasion. Before accepting ant materials, we are verifying material quality with spectral analysis.

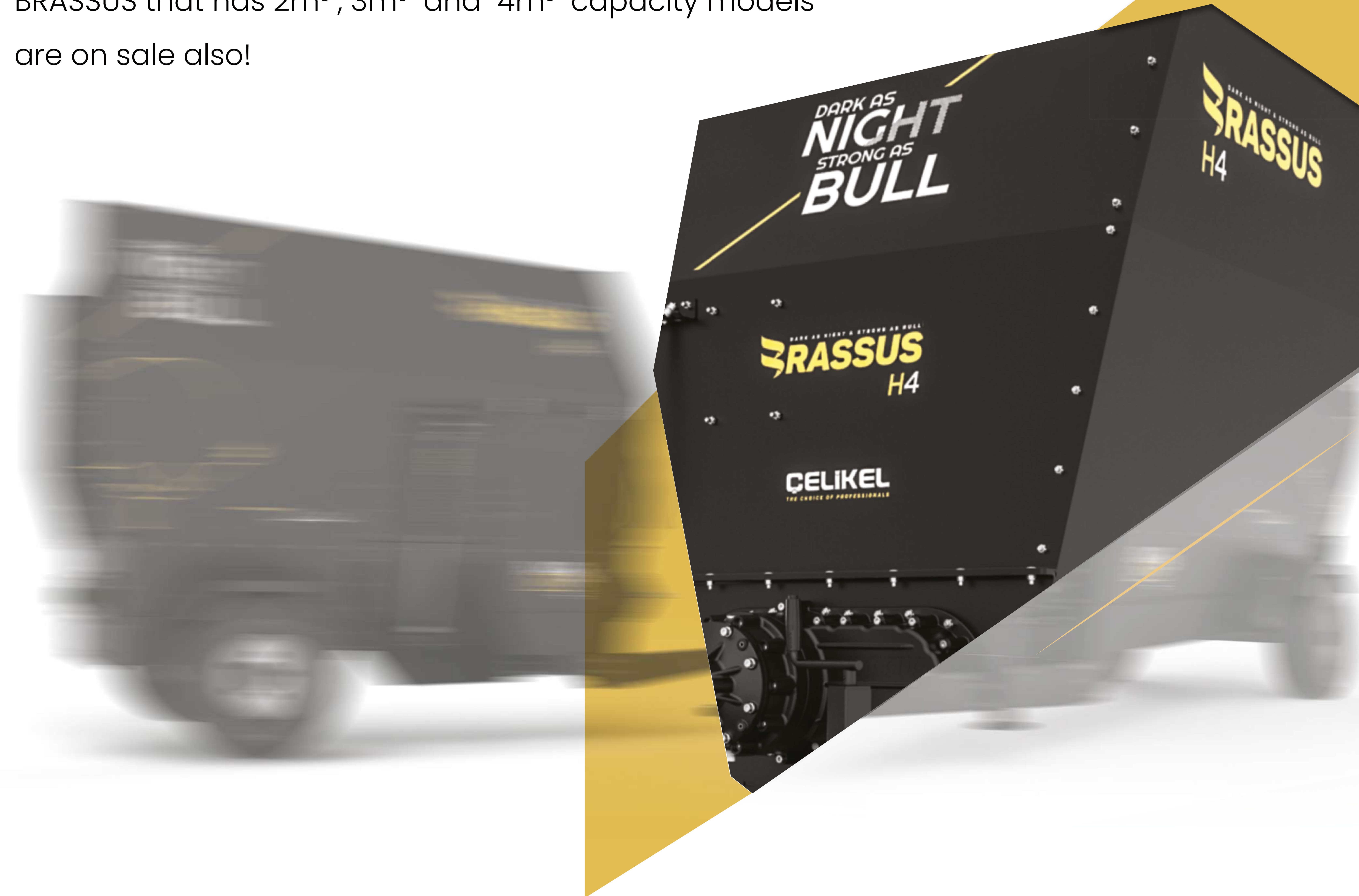
BRASSUS

DARK AS NIGHT STRONG AS BULL

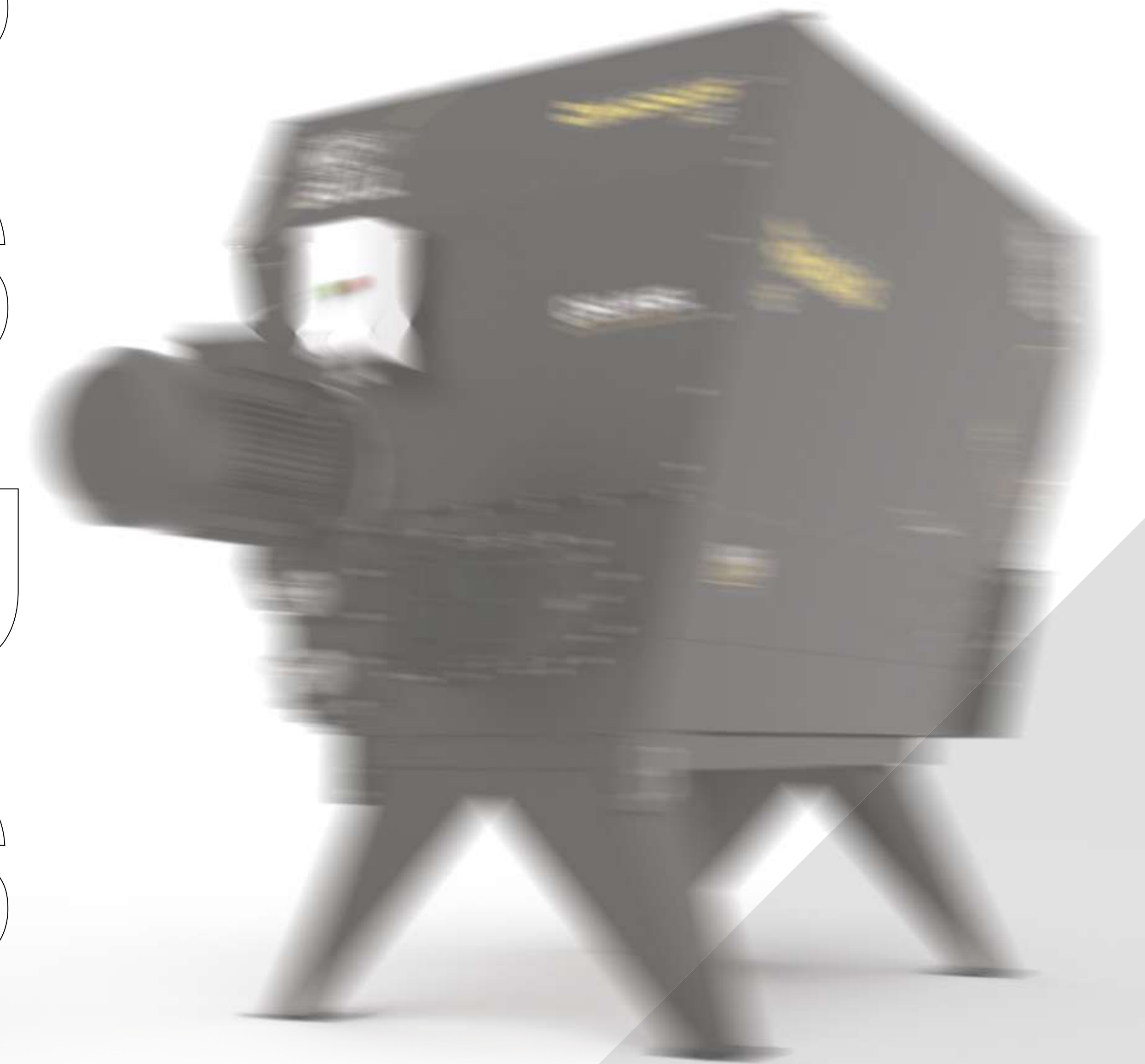
Only thing Brauss does not have and other machines have is a role model! Children who have limits as wearing their father's cloths think that they grew and become stronger. But this feeling is a short-lived mistake! Although BRASSUS is the most preferred feed mixing machine in the world for three consecutive years, not everything about this machine is told.



Feed mixer is a machine for someone but we call it BRASSUS. It is mechanization state of perfection and now BRASSUS that has 2m³, 3m³ and 4m³ capacity models are on sale also!



B
R
A
S
S
U
S



VOLUME OF MACHINE	0.75 m ³	1.5 m ³ LE	1.5 m ³ T	2 m ³ TB	2 m ³ LE	2 m ³ L	2 m ³ TEBH	3m ³	4 m ³	5 m ³	6 m ³	8 m ³	10 m ³	12 m ³	14 m ³
LENGTH-A (mm)	1500	1800	2625	3910	1980	1960	3910	4280	4280	4780	4780	5200	5200	5200	5200
WIDTH-B (mm)	1500	1670	1670	1680	1920	1450	1835	1855	1855	2115	2115	2150	2150	2150	2150
HEIGHT-E (mm)	1490	1600	1750	1730	1620	1620	1730	2000	2350	2235	2490	2460	2660	2860	3060
MAXIMUM LOADED WEIGHT (kg)	605	910	990	1570	1260	1170	1640	2140	2520	3100	3540	5430	6250	8110	9030
EMPTY WEIGHT (kg)	380	460	540	970	660	570	1040	1240	1320	1600	1740	3030	3250	4510	4830
PTO SPEED (rpm)	540	540	540	540	540	540	540	540	540	540	540	540	540	540	540
WHEEL OPTIONS	4 xø150 Caster Wheel	-	2 x 160/6.5/8	2 x 185/R14c	-	-	2 x 185/R14c	2 x 10.0/75- 15,3	2 x 10.0/75- 15,3	2 x 10.0/75- 15,3	2 x 10.0/75- 15,3	2 x 12.5/80- 15.3	2 x 12.5/80- 15.3	2 x 12.5/80- 15.3	2 x 12.5/80- 15.3
POWER REQUIREMENT (v - kw/hp)	220 v - 3kw/4hp	380 v - 7.5 kw/10hp	380 v - 7.5 kw/10hp	35hp	380 v - 7.5 kw/10hp	35hp	380 v - 7.5 kw/10hp	40 hp	40 hp	50-55 hp	50-55 hp	48 kw/65 hp	48 kw/65 hp	59 kw/80 hp	80 hp
POWER SOURCE	Electric + Pto	Electric + Pto	Pto	Pto	Electric + Pto	Pto	Electric + Pto	Pto	Pto	Pto	Pto	Pto	Pto	Pto	Pto
WEIGHT SYSTEM LOADCELL QUANTITY	-	-	-	-	-	-	-	3	3	3	3	3	3	3	3
NUMBER OF AUGER KNIFE	4	5	5	5	5	5	5	6	6	7	7	8	8	10	10
NUMBER OF STABLE KNIFE	-	-	-	2	2	2	2	2	2	2	2	2	2	2	2
STAIR	-	-	-	-	-	-	-	-	-	-	-	Optional	Optional	Optional	Optional
RIGHT SIDE DISCHARGING COVER	Standard	Standard	Standard	Standard	Standard	Standard	Standard	Standard	Standard	Standard	Standard	Standard	Optional	Optional	Optional
LEFT SIDE DISCHARGING COVER	Optional	Optional	Optional	Optional	Optional	Optional	Optional	Optional	Optional	Optional	Optional	Optional	Optional	Optional	Optional
RONT DISCHARGING COVER	-	-	-	-	-	-	-	-	-	-	-	Optional	Optional	Optional	Optional
REAR DISCHARGING COVER	-	-	-	-	-	-	-	-	-	-	-	Optional	Optional	Optional	Optional
RIGHT AND LEFT SIDE DISCHARGING COVER	-	-	-	Standard	-	-	Standard	Standard	Standard	Standard	Standard	Standard	Optional	Optional	Optional
RIGHT CROSS DISCHARGING COVER	-	-	-	-	-	-	-	-	-	-	-	Standard	Standard	Standard	Standard
RIGHT FRONT CROSS AND LEFT FRONT CROSS DISCHARGING COVER	-	-	-	-	-	-	-	-	-	-	-	Optional	Optional	Optional	Optional
BAGGING KIT	Optional	Optional	Optional	Optional	Optional	Optional	Optional	Optional	Optional	Optional	Optional	Optional	Optional	Optional	Optional
WEIGHT SYSTEM	Optional	Optional	Optional	Optional	Optional	Optional	Optional	Optional	Optional	Optional	Optional	Optional	Optional	Optional	Optional
LOADING BUCKET	Optional	Optional	Optional	Optional	Optional	Optional	Optional	Optional	Optional	Optional	Optional	Optional	Optional	Optional	Optional
ELECTRIC ENGINE	Standard	Standard	Optional	Optional	Standard	-	Standard	Optional	Optional	-	-	-	-	-	-
DISCHARGING COVER	Manuel	Manuel	Hydraulic	Hydraulic	Manuel	Hydraulic	Hydraulic	Hydraulic	Hydraulic	Hydraulic	Hydraulic	Hydraulic	Hydraulic	Hydraulic	Hydraulic
HYDRAULIC (STAND-ALONE)	-	-	-	-	-	-	-	Optional	Optional	Optional	Optional	Optional	Optional	Optional	Optional
CONVEYOR BELT	-	-	-	-	-	-	-	Optional	Optional	Optional	Optional	Optional	Optional	Optional	Optional
MAGNET	Optional	Optional	Optional	Optional	Optional	Optional	Optional	Optional	Optional	Optional	Optional	Optional	Optional	Optional	Optional
BUCKET OPTION	-	-	-	Standard	-	-	Standard	Standard	Standard	Standard	Standard	Standard	Optional	Optional	Optional
AXLE SYSTEM WITH BRAKE	3 Point Connection Type	3 Point + Stable Type	3 Point + Towing Type	Towing Type	3 Point + Stable Type	3 Point + Stable Type	Çeki Tipi	Trailer Type	Trailer Type	Trailer Type	Trailer Type	Trailer Type	Trailer Type	Trailer Type	Trailer Type
WARNING LIGHT	Optional	Optional	Optional	Optional	Optional	Optional	Optional	Optional	Optional	Optional	Optional	Optional	Optional	Optional	Optional
BUFFER LIGHTS	-	-	-	-	-	-	-	-	-	-	-	Optional	Optional	Optional	Optional

Feed Mixer Wagon

PROMISES DELIVERED

Çelikel looking after requirements of all businesses working on animal production area manufactures CHARGER series feed mixer machines in several capacities range from 0,75m³ to 52m³. CHARGER Series having vertical auger system distinguishes with chassis design and bunker capacities.



PRESENTATION **2021**

CHARGER

VOLUME OF MACHINE	16 m³	18 m³	20 m³	22 m³	20 m³	22 m³	30 m³
LENGTH-A (mm)	7600	7700	7890	7890	7700	7760	8670
WIDTH-B (mm)	2225	2250	2225	2225	2225	2225	2500
HEIGHT-E (mm)	2730	2590	2735	2800	2590	2770	3195
MAXIMUM LOADED WEIGHT (kg)	11490	12490	13200	14000	12360	13000	19700
EMPTY WEIGHT (kg)	6690	7090	7200	7400	6360	6400	10700
PTO SPEED (rpm)	540	540	540	540	540	540	540
WHEEL OPTIONS	4 x 215/70/R17.5	4 x 215/70/R17.5	4 x 215/70/R17.5	4 x 215/70/R17.5	-	-	-
POWER REQUIREMENT - PTO (kw/hp)	67kw /90hp	70kw /95hp	81kw /110hp	81kw /110hp	2 x 45 kw	2 x 45 kw	110 kw
NUMBER OF WEIGHT SYSTEM LOADCELL	3	3	3	3	4	4	4
NUMBER OF AUGER KNIFE	2 x 8	2 x 8	2 x 10	2 x 10	2 x 10	2 x 10	2 x 10
NUMBER OF STABLE KNIFE	2	2	2	2	2	2	2
STAIR	Optional	Optional	Optional	Optional	-	-	-
FRONT DISCHARGE COVER	Standard	Standard	Standard	Standard	Standard	Standard	Standard
REAR DISCHARGE COVER	Optional	Optional	Optional	Optional	Optional	Optional	Optional
RIGHT CROSS DISCHARGE COVER	Optional	Optional	Optional	Optional	-	-	-
RIGHT FRONT CROSS AND LEFT FRONT CROSS DISCHARGE COVER	Optional	Optional	Optional	Optional	-	-	-
BAGGING KIT	Optional	Optional	Optional	Optional	-	-	-
WEIGHT SYSTEM	Optional	Optional	Optional	Optional	Standard	Standard	Standard
LOADING BUCKET	Optional	Optional	Optional	Optional	Optional	Optional	Optional
ELECTRICITY ENGINE	-	-	-	-	Standard	Standard	Standard
TWO SPEED REDUCER	Optional	Optional	Optional	Optional	-	-	-
DISCHARGE COVER	Hydraulic	Hydraulic	Hydraulic	Hydraulic	Mekanik	Mekanik	Mekanik
HYDRAULIC (STAND-ALONE)	Optional	Optional	Optional	Optional	Optional	Optional	Optional
CONVEYOR BELT	Optional	Optional	Optional	Optional	Optional	Optional	Optional
MAGNET	Optional	Optional	Optional	Optional	-	-	-
TRACTOR CONNECTION TYPE	Trailer Type	Trailer Type	Trailer Type	Trailer Type	Stable Type	Stable Type	Stable Type
AXLE SYSTEM WITH BRAKE	Optional	Optional	Optional	Optional	-	-	-
WARNING LIGHT	Optional	Optional	Optional	Optional	Optional	Optional	Optional
BUFFER LIGHTS	Optional	Optional	Optional	Optional	-	-	-

Feed Mixer Wagon



CHARGER MICRO

CHARGER series feed mixer machines becomes solution of every business with different capacity options. CHARGER series providing simplicity of homogenous and quality rations preparation with auger systems peculiar to its capacity exhibits its mastership on mixing of coarse and concentrate feeds.



CHARGER

VOLUME OF MACHINE	0.75 m³	1.5 m³ LE	1.5 m³ T	2 m³ TB	2 m³ LE	2 m³ L	2 m³ TEBH	3m³	4 m³	5	6 m³	8 m³	10 m³	12 m³	14 m³
LENGTH-A (mm)	1500	1800	2625	3910	1980	1960	3910	4280	4280	4780	4780	5200	5200	5200	5200
WIDTH-B (mm)	1500	1670	1670	1680	1920	1450	1835	1855	1855	2115	2115	2150	2150	2150	2150
HEIGHT-E (mm)	1490	1600	1750	1730	1620	1620	1730	2000	2350	2235	2490	2460	2660	2860	3060
MAXIMUM LOADED WEIGHT (kg)	605	910	990	1570	1260	1170	1640	2140	2520	3100	3540	5430	6250	8110	9030
EMPTY WEIGHT (kg)	380	460	540	970	660	570	1040	1240	1320	1600	1740	3030	3250	4510	4830
PTO SPEED (rpm)	540	540	540	540	540	540	540	540	540	540	540	540	540	540	540
WHEEL OPTIONS	4 xø150 Caster Wheel	-	2 x 160/6.5/8	2 x 185/R14c	-	-	2 x 185/R14c	2 x 10.0/75-15,3	2 x 10.0/75-15,3	2 x 10.0/75-15,3	2 x 10.0/75-15,3	2 x 12.5/80-15.3	2 x 12.5/80-15.3	2 x 12.5/80-15.3	2 x 12.5/80-15.3
POWER REQUIREMENT (v - kw/ hp)	220 v - 3kw/4hp	380 v - 7.5 kw/10hp	380 v - 7.5 kw/10hp	35hp	380 v - 7.5 kw/10hp	35hp	380 v - 7.5 kw/10hp	40 hp	40 hp	50-55 hp	50-55 hp	48 kw/65 hp	48 kw/65 hp	59 kw/80 hp	80 hp
POWER SOURCE	Electric + Pto	Electric + Pto	Pto	Pto	Electric + Pto	Pto	Electric + Pto	Pto	Pto	Pto	Pto	Pto	Pto	Pto	Pto
WEIGHT SYSTEM LOADCELL QUANTITY	-	-	-	-	-	-	-	3	3	3	3	3	3	3	3
NUMBER OF AUGER KNIFE	4	5	5	5	5	5	5	6	6	7	7	8	8	10	10
NUMBER OF STABLE KNIFE	-	-	-	2	2	2	2	2	2	2	2	2	2	2	2
STAIR	-	-	-	-	-	-	-	-	-	-	-	Optional	Optional	Optional	Optional
RIGHT SIDE DISCHARGING COVER	Standard	Standard	Standard	Standard	Standard	Standard	Standard	Standard	Standard	Standard	Standard	Optional	Optional	Optional	Optional
LEFT SIDE DISCHARGING COVER	Optional	Optional	Optional	Optional	Optional	Optional	Optional	Optional	Optional	Optional	Optional	Optional	Optional	Optional	Optional
FRONT DISCHARGING COVER	-	-	-	-	-	-	-	-	-	-	-	Optional	Optional	Optional	Optional
REAR DISCHARGING COVER	-	-	-	-	-	-	-	-	-	-	-	Optional	Optional	Optional	Optional
RIGHT AND LEFT SIDE DISCHARGING COVER	-	-	-	Standard	-	-	Standard	Standard	Standard	Standard	Standard	Optional	Optional	Optional	Optional
RIGHT CROSS DISCHARGING COVER	-	-	-	-	-	-	-	-	-	-	-	Standard	Standard	Standard	Standard
RIGHT FRONT CROSS AND LEFT FRONT CROSS DISCHARGING COVER	-	-	-	-	-	-	-	-	-	-	-	Optional	Optional	Optional	Optional
BAGGING KIT	Optional	Optional	Optional	Optional	Optional	Optional	Optional	Optional	Optional	Optional	Optional	Optional	Optional	Optional	Optional
WEIGHT SYSTEM	Optional	Optional	Optional	Optional	Optional	Optional	Optional	Optional	Optional	Optional	Optional	Optional	Optional	Optional	Optional
LOADING BUCKET	Optional	Optional	Optional	Optional	Optional	Optional	Optional	Optional	Optional	Optional	Optional	Optional	Optional	Optional	Optional
ELECTRIC ENGINE	Standard	Standard	Optional	Optional	Standard	-	Standard	Optional	Optional	-	-	-	-	-	-
DISCHARGING COVER	Manuel	Manuel	Hydraulic	Hydraulic	Manuel	Hydraulic	Hydraulic	Hydraulic	Hydraulic	Hydraulic	Hydraulic	Hydraulic	Hydraulic	Hydraulic	Hydraulic
HYDRAULIC (STAND-ALONE)	-	-	-	-	-	-	-	Optional	Optional	Optional	Optional	Optional	Optional	Optional	Optional
CONVEYOR BELT	-	-	-	-	-	-	-	Optional	Optional	Optional	Optional	Optional	Optional	Optional	Optional
MAGNET	Optional	Optional	Optional	Optional	Optional	Optional	Optional	Optional	Optional	Optional	Optional	Optional	Optional	Optional	Optional
BUCKET OPTION	-	-	-	Standard	-	-	Standard	Standard	Standard	Standard	Standard	Optional	Optional	Optional	Optional
AXLE SYSTEM WITH BRAKE	3 Point Connection Type	3 Point + Stable Type	3 Point + Towing Type	Towing Type	3 Point + Stable Type	3 Point + Stable Type	Çeki Tipi	Trailer Type	Trailer Type	Trailer Type	Trailer Type	Trailer Type	Trailer Type	Trailer Type	Trailer Type
WARNING LIGHT	Optional	Optional	Optional	Optional	Optional	Optional	Optional	Optional	Optional	Optional	Optional	Optional	Optional	Optional	Optional
BUFFER LIGHTS	-	-	-	-	-	-	-	-	-	-	-	Optional	Optional	Optional	Optional

CHALLENGER I

CHALLENGER I, professional solution of small and middle scale businesses can make silage up to 1500 m² per hour with a low power requirement like 40 hp. Also, it can deliver silage to desired place of trailer perfectly by means of Superblow strong blowing system with its hydraulic controlled funnel system and directed head.

Silage Machines



PRESENTATION 2021

CHALLENGER 2

Revolution in the sector of silage machines!
The first 75 hp power requirement in the world. Challenger 2 silage machine has been developed by Çelikel Engineers by being inspired from the most durable and the fastest animal of the world.

Silage Machines

PRESENTATION **2021**



IT CAN BE THE MOST DESIRED MACHINE OF SECTOR.

Some people desire it because they are impressed from its appearance. Some for something other people say about it. Some for its performance. Some for prestige. Some for second hand is worth. And some do not need reason, just desire: The Most Successful Machine of Turkish Agriculture Machine Sector! CHALLENGER 3.

Silage Machines

PRESENTATION **2021**

CHALLENGER 3





CHALLENGER 4

The new row independent machine that can work with 150 hp tractors is in the field, now, let the rivals think! Row independent silage machine which adapts several tractors presents options that can be fastened to front side, rear side of tractor and near the tractor; presents complete productive usage by its 540, 750 and 1000 revolution reducer options.

Silage Machines

ATTRIBUTES	SINGLE ROW SILAGE MACHINE	2 ROW SILAGE MACHINE	3 ROW SILAGE MACHINE	4 ROW SILAGE MACHINE
LENGTH (WORK POSITION (mm))	2380	2680 (Side Position)	2600	2920
LENGTH - ROAD POSITION (mm)	1185	2750	2600	2920
HEIGHT - WORK POSITION (mm)	3175	4130	4165	4375
HEIGHT - ROAD POSITION (mm)	2122	2460	2475	2703
WIDTH - WORK POSITION (mm)	2355	4190	4115	3055
WIDTH - ROAD SITUATION (mm)	2355	1985	2420	3055
WIDTH - REAR WORK POSITION (mm)	2750	2750	-	-
MODEL	CHALLENGER I	CHALLENGER II PLUS	CHALLENGER III	CHALLENGER IV
WORK WIDTH (mm)	700	1250	2100	3000
WORK CAPACITY * (m ² /saat)	1000 - 1500	4000 - 4500	5000 - 6000	8000 - 10000
MINIMUM POWER REQUIREMENT** (kw/hp)	28 kw/40 hp	56 kw/75 hp	100 kw/130 hp	110 kw/150 hp
PTO WORKING REVOLUTION (rpm)	540	540 / 750 (Optional)	540 / 1000	1000
WORKING POSITION	Right Side	Front (Optional) / Right Side / Rear	Front / Rear	Standard
NUMBER OF THROWING PALLET	6	12	12	12
NUMBER OF CHOPPER KNIFE	12	12	12	12
NUMBER OF SHREDDER KNIFE	12	12	12	12
NUMBER OF STABLE KNIFE	1	1	1	3
CHOPPING SIZE*** (mm)	3-10	Adjustable (3 - 10)	Adjustable (3 – 10 mm)	Adjustable (3 – 10 mm)
WHEEL SIZE	16x6,5-8	165x70x13	165x70x13	21x8-9 NHS
NUMBER OF WHEEL	1	1	2	2
THREE POINT CONNECTION SYSTEM	Category II	Category II - III	Category II - III	Category II - III
WEIGHT (kg)	600	1350	1520	2350 kg
HYDRAULIC (STAND-ALONE)	-	Standard	-	-
HYDRAULIC CONTROLLER POSITION	-	Operator Side (Inside Tractor Cabin)	-	-
NUMBER OF ROUND KNIFE	-	6	6	-
SHREDDER KNIVES	-	Special Design on Chopper Knife Surface	Special Design on Chopper Knife Surface	-
INSIDE BUNKER GGG60 CAST IRON CRUSHER (OPTIONAL")	Operator Side (Inside Tractor Cabin)	-	-	-
CHOPPER KNIVES	Optional	Optional	-	-
OPTIONAL INSIDE BUNKER GGG60 CAST IRON CRUSHER"	Optional	Optional	-	-
SAFETY SYSTEM	-	Power Transmission Belt	Power Transmission Belt	-
MACHINE MOVEMENT TRANSMISSION	-	Gear Box and Flexible Transmission Combination	Gear Box and Flexible Transmission Combination	-
HYDRAULIC MIDDLE LEVER	-	Standard	Standard	-
TEMPORARY REVERSE OPERATION	-	-	-	Standard

CRAFTER

There stands a perfect design behind all the success! If you make a point of importance, it means that you deserve Crafter...

Crafter which differs from its rivals with distribution broadness and homogeneity is a masterpiece of Çelikel engineering owing to its work broadness up to 25 meters.

Manure Management Machines



PRESENTATION **2021**



CRUISER

Tank filling process is completed within very short time by means of excellent pump intake and pressure power of CRUISER. Then, you can realize manuring in fields comfortably via liquid manure spreader system.

You can see how CRUISER is serious in performance via pressure and vacuum indicators, you can manage machine without you get out of tractor. CRUISER both decreases manure cost and works to enhance productivity.

CRAFTER MODEL	X7	X13	X15	X18	X20
LENGTH-A (mm)	5890	7395	8120	7725	8355
WIDTH-B (mm)	2265	2265	2965	2965	3115
HEIGHT-E (mm)	2870	2935	2985	3325	3295
WHEEL TRACK WIDTH-F (mm)	1720	1760	2425	2425	2620
LOADING HEIGHT-G (mm)	2450	2500	2620	2960	2930
EMPTY WEIGHT (kg)	4000	4750	5835	6150	6400
MAXIMUM OVERLOADING	8900	13200	16500	19500	22000
COVER LEVEL (kg)	8250	12500	15000	17500	20000
MAX. TOTAL WEIGHT (kg)	13250	18620	22335	25650	28400
POWER REQUIREMENT – PTO (hp)	60	70	90	120	150
CAPACITY (TON)	8,25	13	15	17,5	20
MAX. CAPACITY (m3)	7,4	11	13,3	16,3	17,3
SPREADER SYSTEM	Vertical Spreader (With Hitters)	Vertical Spreader (With Hitters)	Vertical Spreader (With Hitters)	Vertical Spreader (With hitters)	Vertical Spreader (With Hitters)
PTO SPEED (rpm)	540 rev/min	540 rev/min	540 rev/min	540 rev/min	540 rev/min
SPREAD AREA (m)	4...20	4...20	4...20	4...20	4...20
WHEEL SIZE	400/60 R 15,5	400/60 R 15,5	550-60 * 22.5	550-60 * 22.5	600-50 * 22.5
NUMBER OF WHEEL	2	4	4	4	4
SUSPENSION SYSTEM	Sabit	Tandem	Tandem	Tandem	Tandem
BRAKE SYSTEM	Opsiyonlu	Opsiyonlu	Standard	Standard	Standard

CRUISER MODEL	Z3	Z5	Z10	Z20
VOLUME OF MACHINE (lt / gallon)	3000 / 792	5000 / 1320	10000 / 2640	20000 / 5280
LENGTH-A (mm)	4350	5880	7670	9500
WIDTH-B (mm)	2000	2150	2617	2525
HEIGHT-E (mm)	2470	2651	3045	3345
POWER REQUIREMENT - PTO (kw/hp)	30kw / 40hp	40kw / 55hp	52kw / 70hp	82kw / 110hp
PTO SPEED (rpm)	540	540	540	540
DISCHARGING SYSTEM	Pressure Management - With Sprinkling	Pressure Management - With Sprinkling	Pressure Management - With Sprinkling	Pressure Management - With Sprinkling
WHEEL SIZE	13.0 16,5 / 18	400/60 15,5	550/60	550/60 22,5
WEIGHT (kg)	1200	1914	2940	5500
MAX. TOTAL WEIGHT (kg)	4800	8900	14740	28500
SPREAD AREA (m)	10 - 15	10 - 15	10 - 20	10 - 30
NUMBER OF WHEELS	2	2	2	4
AXLE SYSTEM	Single Axle	Single Axle	Single Axle	Single Axle
HYDRAULIC BRAKE	Standard	Standard	Standard	Standard
WARNING LIGHT	Standard	Standard	Standard	Standard
EXTERNAL FILLING COVER	Standard	Standard	Standard	Standard
HYDRAULIC SPREADER VALVE	Standard	Standard	Standard	Standard
ANGLE ADJUSTABLE SPREADER	Standard	Standard	Standard	Standard
MANURE SEPERATOR TANK	Standard	Standard	Standard	Standard
TANK SAFETY VALVE	Standard	Standard	Standard	Standard
GEOMETRIC PUMP CAPACITY (L / min)	5000	7000	7000	11100
VACUUM SAFETY VALVE	Standard	Standard	Standard	Standard
PRESSURE SAFETY VALVE	Standard	Standard	Standard	Standard
TOP THROWER	Optional	Optional	Optional	Optional
TOP THROWER DISTANCE (45 ° - 5 BAR)	40 - 60 m	40 - 60 m	40 - 60 m	40 - 60 m
HYDRAULIC TOP THROWER VALVE	Optional	Optional	Optional	Optional

SCUD

Scud makes decomposition process easier via carbide covered auger and its special designed strainers which it has. Manure management is under your control with Scud which can resist against to manure acid for long years...

Animal manure which is one of the biggest problem of businesses can be turn into income by means of Scud.



SEPERATOR

MODEL	SCUD 4000	SCUD 6000
MOTOR	5,5 kW	5000 / 1320
WEIGHT	460 kg	5880
CAPACITY	25-40 m ³ /hour	40-60 m ³ /hour
SIEVE	0,3-1 mm	0,3-1 m m
W/L/H	50/175/115 cm	60/205/115 cm

MIXER

MODEL	SCUD MIX 11	SCUD MIX 22
POWER	11 kW	22 kW
WEIGHT	180 kg	220 k g
WING DIAMETER	575 mm	600 mm
TOUR	400 rpm/min	400 rpm/mi n

PUMP

MODEL	SCUD PUMP 5.5	SCUD PUMP 11
POWER	5,5 kW	7,5 kW
WEIGHT	75 kg	85 kg
CAPACITY	80 m ³ /hour	120 m ³ /hour
TOUR	1400 rpm/min	1400 rpm/min

PACKAGING MACHINES

ÇELİKEL PERPETUAL, multi-purpose packaging machines were designed for requirements of small and medium scale businesses. However, PERPETUAL can be built as a packaging factory with higher capacity any time by considering packaging requirements of big businesses also. ÇELİKEL engineers having developed PERPETUAL started from the fact that it becomes a semi-automatic and more economical machine rather than it becomes a fully automatic and expensive will be more suitable in terms of investment costs. It is an optimum machine with an affordable price. Its name is PERPETUAL!

PERPETUAL



PERPETUAL GO 2
BUILT TO LAST

PERPETUAL ULTIMATE
BUILT TO LAST

PERPETUAL 1
BUILT TO LAST

MODEL	PERPETUAL STD I	PERPETUAL STD II	PERPETUAL GO I	PERPETUAL GO II	PERPETUAL ULTIMATE I	PERPETUAL ULTIMATE II
LENGTH-A (mm)	8500	10500	8900	10300	7800	9000
WIDTH-B (mm)	3500	3400	3370	2420	2200	2680
HEIGHT-E (mm)	3400	3400	3720	3690	2800	2890
WHEEL TRACK WIDTH-F (mm)	-	-	1450	2130	1920	2120
PACKAGING CAPACITY (package/hour)	180 - 240	360 - 480	180 - 240	360 - 480	160 - 220	320 - 440
MAIZE SILAGE (ton/hour)	6	12	6	12	5	10
BEET PULP (COSSETTE)-(ton/hour)	9	18	9	18	7,5	15
GRAM MAKING WEIGHT (kg)	20 - 60	20 - 60	20 - 60	20 - 60	20 - 60	20 - 60
GRAM MAKING TOLERANCE (gr)	200 - 250	200 - 250	200 - 250	200 - 250	200 - 250	200 - 250
EMPTY WEIGHT (kg)	1100	2300	1800	2450	3150	4710
POWER REQUIREMENT (kw)	9	18	9	18	9	12
POWER REQUIREMENT (A)	18	36	18	36	18	24
POWER (phase)	3	3	3	3	3	3
VACUUM POWER (kw)	0.75	1.5	0.75	1.5	0.75	1.5
WHEEL SIZE	-	-	185/R14C	225/70/R15C	10.0/75-15.3	12,5/80-15.3
COMPRESSOR VOLUME (L)	300	500	300	500	300	500
AIR REQUIREMENT (Bar)	6 ~ 8	6 ~ 8	6 ~ 8	6 ~ 8	6 ~ 8	6 ~ 8
PACKAGE CLOSING	Hot Bonding	Hot Bonding	Hot Bonding	Hot Bonding	Hot Bonding	Hot Bonding
NUMBER OF LOADCELL	3	6	3	6	3	6
NUMBER OF STATION	1	2	1	2	1	2
DOSING	Standard	Standard	Standard	Standard	Standard	Standard
STAIR	Standard	Standard	Standard	Standard	Standard	Standard
FEEDING SYSTEM	Mixer + Conveyor	Mixer + Conveyor	Mixer + Conveyor	Mixer + Conveyor	Bunker	Bunker

PRESENTATION **2021**

**A GAP OF THE ORIGINAL CAN ONLY BE FILLED
WITH ANOTHER ORIGINAL.**

Çelikel machinery can only sustain promised performance with original spare part. Lifecycle and fuel saving of the machine will increase with original spare part.

Çelikel spare parts will perfectly fit your machine and help you use your machine for long years.

Benefit from the quality of Çelikel spare parts and global service network.



SPAREPARTS

CELİKEL

www.celikeltarim.com

CHOICE OF PROFESSIONALS

T H A N K Y O U

www.celikeltarim.com